

**300+**

**PEOPLE**



are working together to build the instrument and prepare for its scientific discoveries.

**13**

**COUNTRIES**

are involved in the development of the instrument.



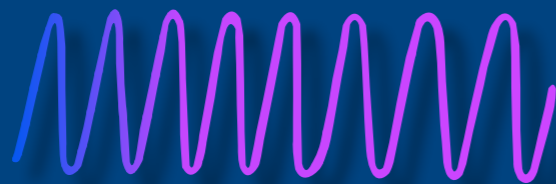
**4**  
**YEARS**

is the expected duration of the mission, with a design lifetime of 10 years overall.



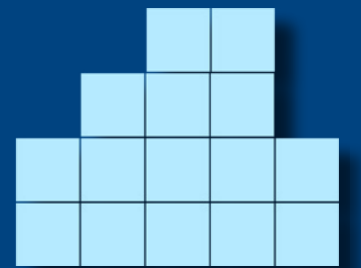
**0.2-12 keV**

is the energy range of the X-rays that we will be able to observe with the X-IFU.

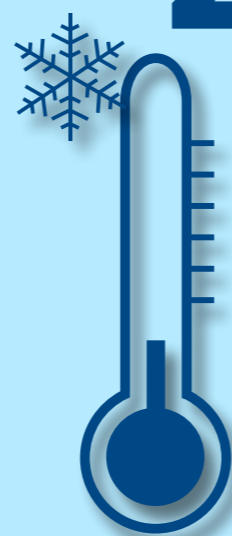


**3000+**  
**PIXELS**

will make up each image captured by the X-IFU.



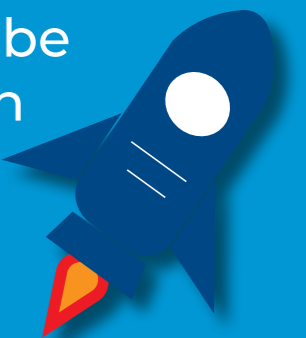
**-273.1°C**



is the temperature at the heart of the X-IFU. It is the perfect environment for its thousands of micro-calorimeters.

**Ariane 6**

is the rocket launcher that *Athena* will be flying with when it takes the X-IFU to space.



**2.4 cm<sup>2</sup>**

is the surface area of the main detector of the X-IFU.

